

high voltage power rectifiers
 diodes haute tension de fort niveau de courant

Types	I _o (A)	V _{RRM} (KV)	I _{FSM} 10 ms (A)	V _F /I _F		I _R /V _{RRM} max (μA)	V(BR) R		t _{rr} max (ns)	Case
				max (V)	max (mA)		min (V)			

FA 30 à 80

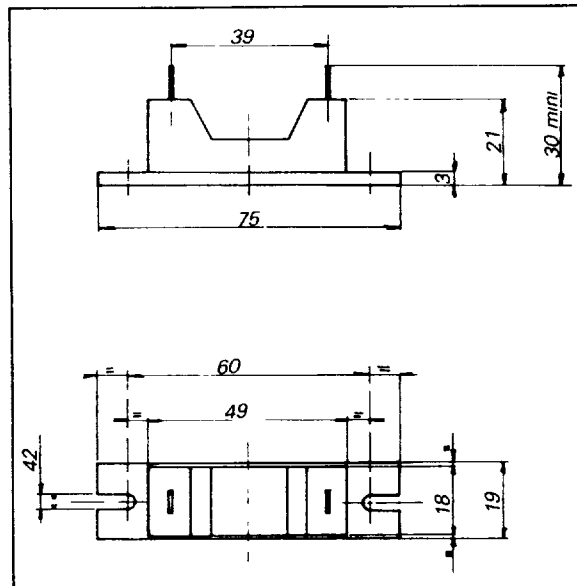
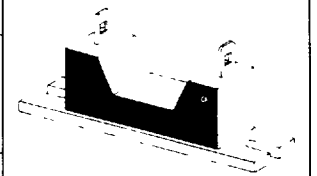
FA	30	2	3	60	6	100	11	3240	
FA	40	2	4	60	8	100	11	4300	
FA	60	1,5	6	60	12	100	11	6300	
FA	80	1	8	60	14	100	11	8740	

FA 30R à FA 80 R

FA	30 R	1,5	3	50	7	100	22	3240	300
FA	40 R	1,5	4	50	9	100	22	4300	300
FA	60 R	1	6	50	14	100	22	6300	300
FA	80 R	1	8	50	16	100	22	8740	300

FA 30UR à 80UR

FA	30 UR	1,5	3	35	7	100	22	3240	75
FA	40 UR	1,5	4	35	7	100	22	4300	75
FA	60 UR	1	6	35	14	100	22	6300	75
FA	80 UR	1	8	35	16	100	22	8740	75

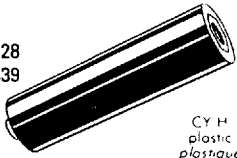


FACON SEMICONDUCTEURS/SEMICONDUCTORS


high voltage power rectifiers
 diodes haute tension de fort niveau de courant

Types	I _o (mA)	V _{RRM} (V)	I _{FSM} 10 ms (A)	V _F /I _F		I _R /V _{RRM} max (μA)	V _{(BR) R} min (V)	t _{rr} max (ns)	Case
				max (V)	max (mA)				

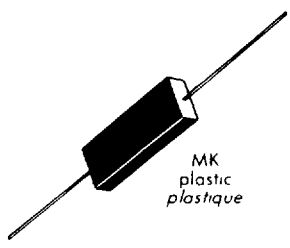
100 mA / T_{amb} = 25 °C T_j = 125 °C

CY	501 H	100	50 000	30	65	100	10	60 000	CB-328 CB-339	 CY H plastic plastique
CY	751 H	100	75 000	30	105	100	10	100 000		


200 mA / T_{amb} = 25 °C T_j = 125 °C

ME	30	200	3000	2.5	3	200	10	CB-323 CB-324 CB-325 CB-326	 ME plastic plastique
ME	60	200	6000	2.5	6	200	10		
ME	100	200	10000	2.5	10	200	10		
ME	120	200	12000	2.5	12	200	10		
ME	200	200	20000	2.5	24	200	10		
ME	200	200	20000	2.5	24	200	10		

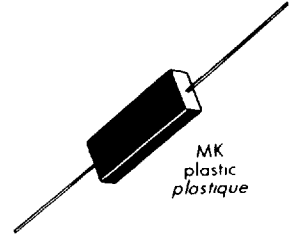
250 mA / T_{amb} = 50 °C T_j = 150 °C

M	15 K/1 N 2 887	250	1 500	2	3	250	0.5	1 550	CB-346 CB-347	 MK plastic plastique
M	20 K/1 N 2 891	250	2 000	2	4	250	0.5	2 100		
	/1 N 2 897	250	2 500	2	5	250	0.5	2 600	CB-28	
M	30 K/1 N 2 901	250	3 000	2	6	250	0.5	3 100		
	/1 N 2 905	250	3 500	2	7	250	0.5	3 700	CB-29	
M	40 K/1 N 2 911	250	4 000	2	8	250	0.5	4 200		
	/1 N 2 915	250	4 500	2	9	250	0.5	4 700	CB-30	
M	50 K/1 N 2 919	250	5 000	2	10	250	0.5	5 200		
	/1 N 2 921	250	5 500	2	11	250	0.5	5 800	CB-31	
M	60 K/1 N 2 923	250	6 000	2	12	250	0.5	6 300		
	/1 N 2 925	250	6 500	2	13	250	0.5	6 800	CB-32	
M	80 K/05 RM 80	250	8 000	2	16	250	0.5	8 400		
	/1 N 2 925	250	6 500	2	13	250	0.5	6 800	CB-353	
M	100 K/05 RM 100	250	10 000	2	20	250	0.5	10 600		
	/1 N 2 925	250	6 500	2	13	250	0.5	6 800	CB-32	
M	120 K/05 RM 120	250	12 000	2	24	250	0.5	12 600		
	/1 N 2 925	250	6 500	2	13	250	0.5	6 800	CB-32	
M	150 K/05 RM 150	250	15 000	2	30	250	0.5	15 700		
	/1 N 2 925	250	6 500	2	13	250	0.5	6 800	CB-32	
M	200 K/05 RM 200	250	20 000	2	40	250	0.5	21 000		
	/1 N 2 925	250	6 500	2	13	250	0.5	6 800	CB-32	
M	300 K/05 RM 250	250	30 000	2	60	250	0.5	31 500		

400 mA / T_{amb} = 25 °C T_j = 125 °C

FME	30	400	3000	20	3	200	10	CB-323 CB-324 CB-325 CB-326	 ME plastic plastique
FME	60	400	6000	20	6	200	10		
FME	100	400	10000	20	10	200	10		
FME	120	400	12000	20	12	200	10		
FME	200	400	20000	20	24	200	10		
FME	200	400	20000	20	24	200	10		

500 mA / T_{amb} = 50 °C T_j = 150 °C

FM	15 K/1 N 2 887	500	1 500	20	3	250	0.5	1 550	CB-346 CB-347	 MK plastic plastique
FM	20 K/1 N 2 891	500	2 000	20	4	250	0.5	2 100		
	1 N 2 897	500	2 500	20	5	250	0.5	2 600	CB-28	
FM	30 K/1 N 2 901	500	3 000	20	6	250	0.5	3 100		
	/1 N 2 905	500	3 500	20	7	250	0.5	3 700	CB-29	
FM	40 K/1 N 2 911	500	4 000	20	8	250	0.5	4 200		
	1 N 2 915	500	4 500	20	9	250	0.5	4 700	CB-30	
FM	50 K/1 N 2 919	500	5 000	20	10	250	0.5	5 200		
	1 N 2 921	500	5 500	20	11	250	0.5	5 800	CB-31	
FM	60 K/1 N 2 923	500	6 000	20	12	250	0.5	6 300		
	1 N 2 925	500	6 500	20	13	250	0.5	6 800	CB-32	
FM	80 K/05 RM 80	500	8 000	20	16	250	0.5	8 400		
	/1 N 2 925	500	6 500	20	13	250	0.5	6 800	CB-32	
FM	100 K/05 RM 100	500	10 000	20	20	250	0.5	10 600		
	/1 N 2 925	500	6 500	20	13	250	0.5	6 800	CB-32	
FM	120 K/05 RM 120	500	12 000	20	24	250	0.5	12 600		
	/1 N 2 925	500	6 500	20	13	250	0.5	6 800	CB-32	
FM	150 K/05 RM 150	500	15 000	20	30	250	0.5	15 700		
	/1 N 2 925	500	6 500	20	13	250	0.5	6 800	CB-32	
FM	200 K/05 RM 200	500	20 000	20	40	250	0.5	21 000		
	/1 N 2 925	500	6 500	20	13	250	0.5	6 800	CB-32	
FM	300 K/05 RM 300	500	30 000	20	60	250	0.5	31 500		

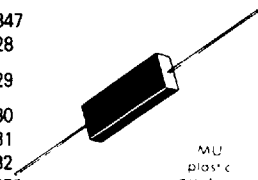
FACON SEMICONDUCTEURS/SEMICONDUCTORS

high voltage power rectifiers

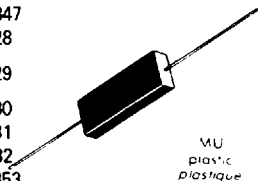
diodes hautes tension de fort niveau de courant

Types	I _o (mA)	V _{RRM} (V)	I _{FSM} 10 ms (A)	V _F / I _F		I _R /V _{RRM} min (uA)	V _{(BR)R} min (V)	t _{rr} max (ns)	Case
				max (V)	max (mA)				

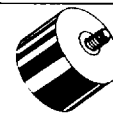
200 mA / T_{amb} = 25 °C T_j = 125 °C

MU 2	200	2000	2	5.2	200	100	2160	200	 MU plastic plastique
MU 3	200	3000	2	7.8	200	100	3240	200	
MU 4	200	4000	2	10.4	200	100	4300	200	
MU 5	200	5000	2	13.0	200	100	5400	200	
MU 6	200	6000	2	15.6	200	100	6300	200	
MU 8	200	8000	2	20.8	200	100	8740	200	
MU10	200	10000	2	26	200	100	10800	200	
MU20	200	20000	2	52	200	100	21600	200	

400 mA / T_{amb} = 25 °C T_j = 125 °C

FMU 2	400	2000	15	5.2	200	100	2160	200	 MU plastic plastique
FMU 3	400	3000	15	7.8	200	100	3240	200	
FMU 4	400	4000	15	10.4	200	100	4300	200	
FMU 5	400	5000	15	13	200	100	5400	200	
FMU 6	400	6000	15	15.6	200	100	6300	200	
FMU 8	400	8000	15	20.8	200	100	8740	200	
FMU 10	400	10000	15	26	200	100	10800	200	
FMU 20	400	20000	15	52	200	100	21600	200	

200/400 mA / T_{amb} 25 °C T_j = 125 °C

EV 12 R	200	12000	20	20	200	100	13600	1500	 EV/EW plastic plastique
EW 15 R	300	15000	20	30	300	100	16000	1500	
EV 15	250	15000	30	20	250	100	16000		
EW 20	400	20000	30	30	400	100	22000		

high voltage rectifier diodes

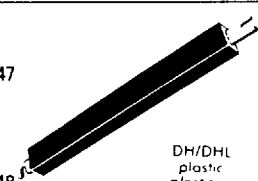
diodes de redressement haute tension

Types	I _o (mA)	V _{RRM} (V)	I _{FSM} 10 ms (A)	V _F / I _F		I _R /V _{RRM} min (uA)	V _{(BR)R} min (V)	t _{rr} max (ns)	Case
				max (V)	max (mA)				

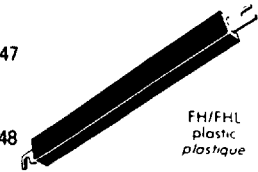
in oil

500 mA / T_{amb} = 25 °C T_j = 125 °C (1 A

dans l'huile

D40H/1RM40	500	4000	40	6	500	1	4300	 DH/DHL plastic plastique
D60H/1RM60	500	6000	40	10	500	1	7200	
D80H/1RM80	500	8000	40	12	500	1	8600	
D100H/1RM100	500	10000	40	15	500	1	10800	
D120H/1RM120	500	12000	40	18	500	1	13600	
D150H/1RM150	500	15000	40	21	500	1	16000	
D200HL/1RM200	500	20000	40	29	500	1	21000	
D250HL/1RM250	500	25000	40	36	500	1	26000	

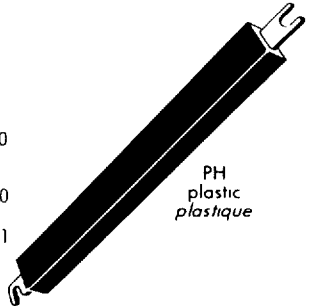
1A / T_{amb} = 25 °C T_j = 125 °C

F 40H	1000	4000	70	6	1000	2	4300	 FH/FHL plastic plastique
F 80H	1000	8000	70	12	1000	2	8600	
F100H	1000	10000	70	15	1000	2	10800	
F150H	1000	15000	70	17	1000	2	18500	
F200HL	1000	20000	70	29	1000	2	21000	
F250HL	1000	25000	70	36	1000	2	26000	
F300HL	1000	30000	70	43	1000	2	34000	

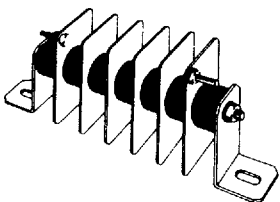
high voltage rectifier diodes
 diodes de redressement haute tension

Types	I _O (A)	V _{RRM} (V)	I _{FSM} 10 ms (A)	V _F / I _F max (V) (A)	I _R /V _{RRM} max (μA)	V _{(BR)R} min (V)	Case
-------	-----------------------	-------------------------	----------------------------------	---	---	----------------------------------	------


3 A / T_{amb} = 25°C T_j = 125°C

P 32 H	3	3200	230	5	3	10	3600	 PH plastic plastique
P 40 H/6RM40		4000		6			4300	
P 48 H		4800		7			5000	
P 56 H		5600		8			6500	
P 64 H/6RM60		6400		8			7600	
P 70 H		7000		8			7600	
P 80 H/6RM80		8000		8			8800	
P 100 H/6RM100		10000		10			11000	
P 120 H/6RM120		12000		12			13000	
P 150 H/6RM150		15000		15			16000	
P 200 H/6RM200		20000		22			20800	
P 250 H/6RM250	25000	27	26000					
P 400 H	40000	44	41000					

6 A / T_{amb} = 25°C T_j = 150°C (12 A in oil dans l'huile)

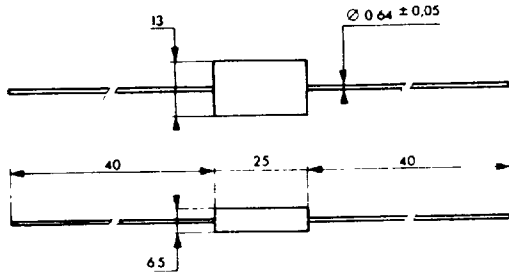
10 RM 60	6	6000	150	9	12	100	 CB-152
10 RM 80		8000		12			
10 RM 100		10000		15			
10 RM 120		12000		17			
10 RM 150		15000		21			
10 RM 200		20000		28			
10 RM 220		22000		30			
10 RM 250		25000		34			

10 A / T_{amb} = 25°C T_j = 150°C (20 A in oil dans l'huile)

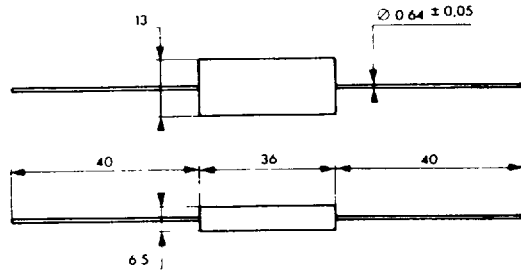
20 RM 60	10	6000	250	9	12	250	 CB-152
20 RM 80		8000		12			
20 RM 100		10000		15			
20 RM 120		12000		17			
20 RM 150		15000		21			
20 RM 200		20000		28			
20 RM 220		22000		30			
20 RM 250		25000		34			

FACON SEMICONDUCTEURS/SEMICONDUCTORS

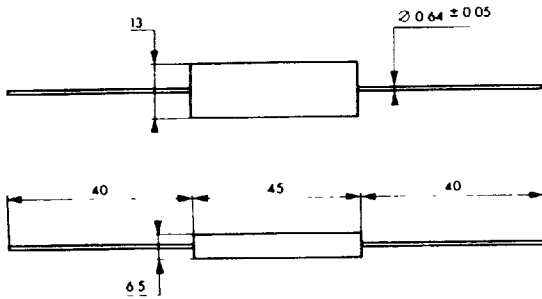
CB-28 (MU 3 - M 30K - 1N 2897/2901)



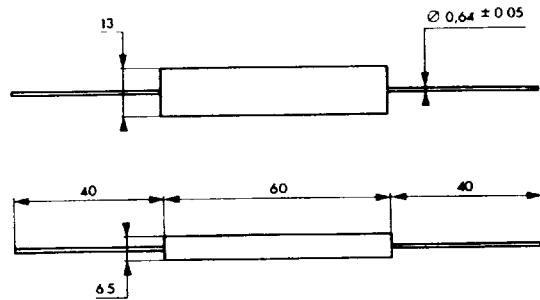
CB-29 (MU 4/5 - M 40/50K - 1N 2905/2911/2915/2919)



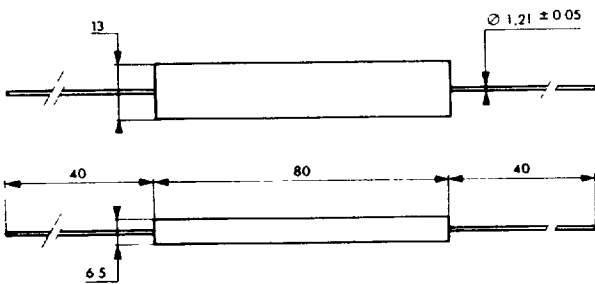
CB-30 (MU 6 - M 60K - 1N 2921/2923)



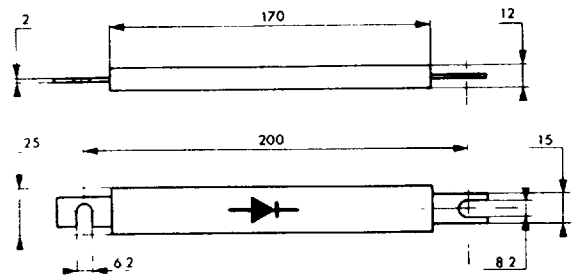
CB-31 (MU 8 - M 80/100K - 1N 2925 05 RM 80/100)



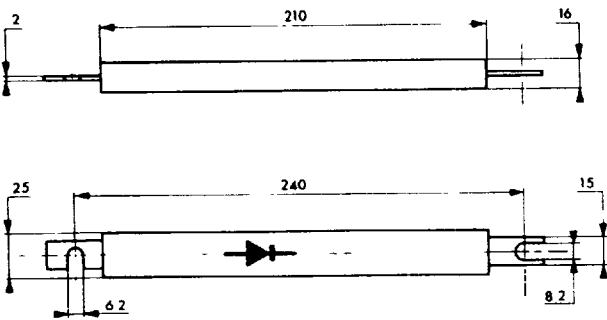
CB-32 (MU 10 - M 120 → 200K 05 RM 120 → 200)



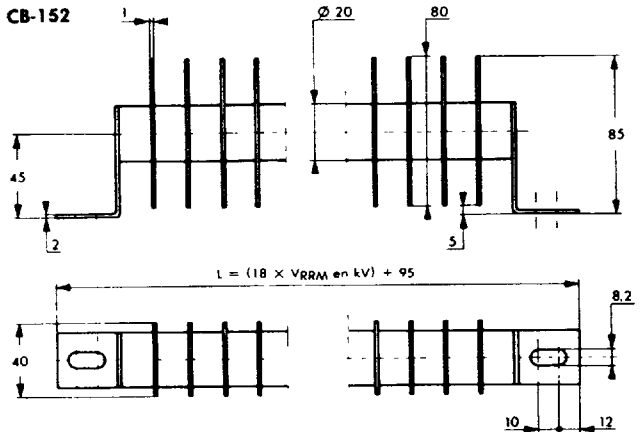
CB-47 (DH - FH - 1 RM 40 → 150)



CB-48 (DHL - FHL - P32 → 80H)



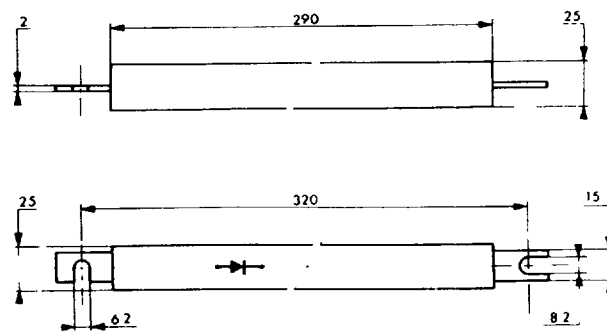
CB-152



$L_{\text{min}} = (18 \times 6) + 95 = 203 \text{ mm}$

$L_{\text{max}} = (18 \times 23) + 95 = 509 \text{ mm}$

CB-160 (P 100/120H - 6 RM 100/120)



CB-323 (ME 30)

